

DISTAL DIGESTIVE SYSTEM LAB EXERCISES 22 & 23

Dr. Lisa Brinn

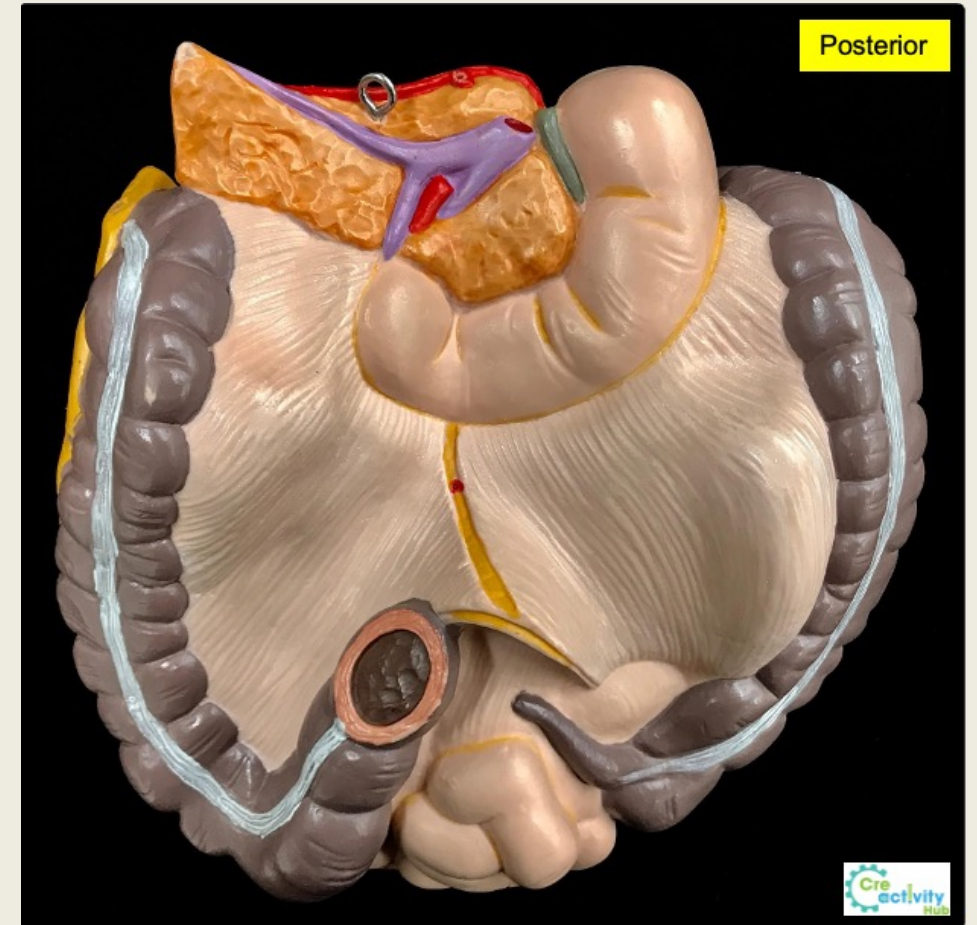
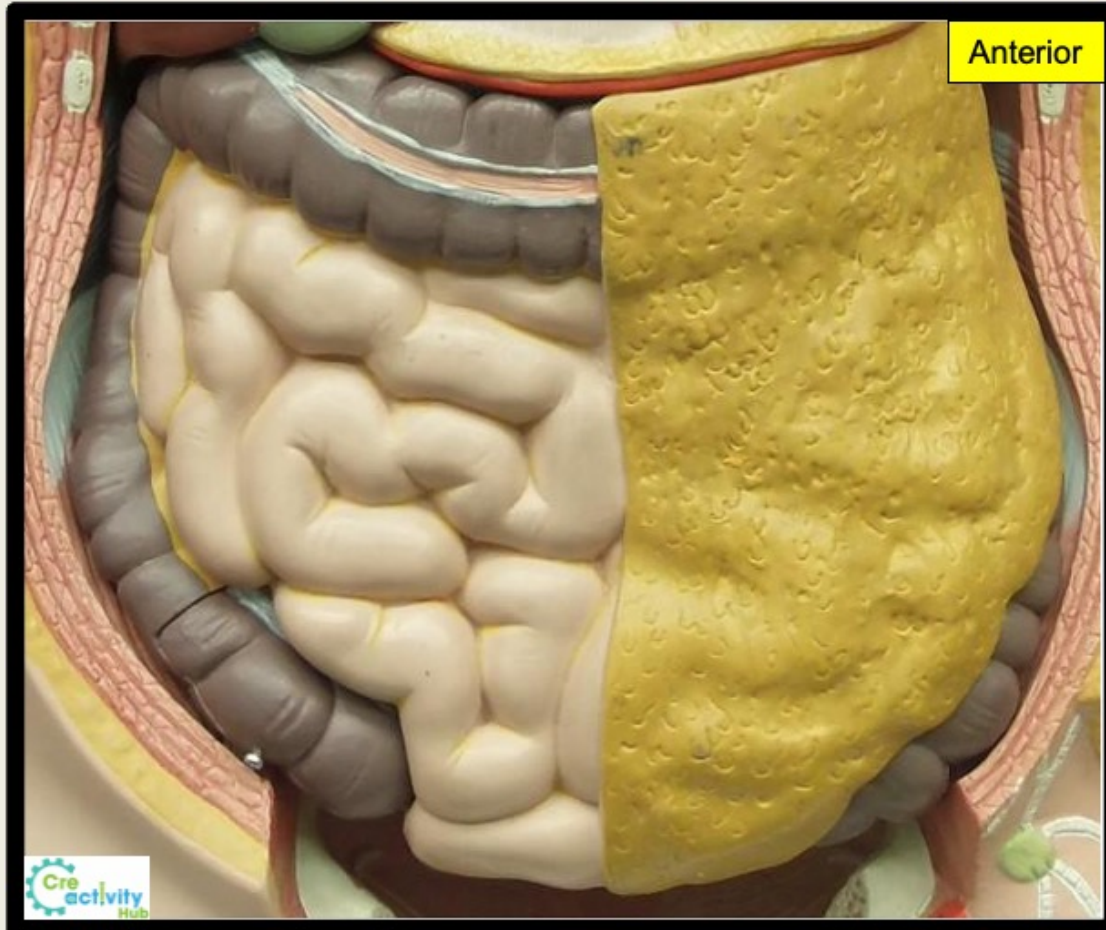
Video Recording Links of Lab Models

- [A&P II Module 9 Digestive System Stomach and Small Intestine](#)
- [A&P II Module 9 Distal Portion of Large Intestine](#)
- [A&P II Module 9 Liver](#)

Small Intestine Terminology List

- Duodenum
- Ileum
- Jejunum

Small Intestine Models

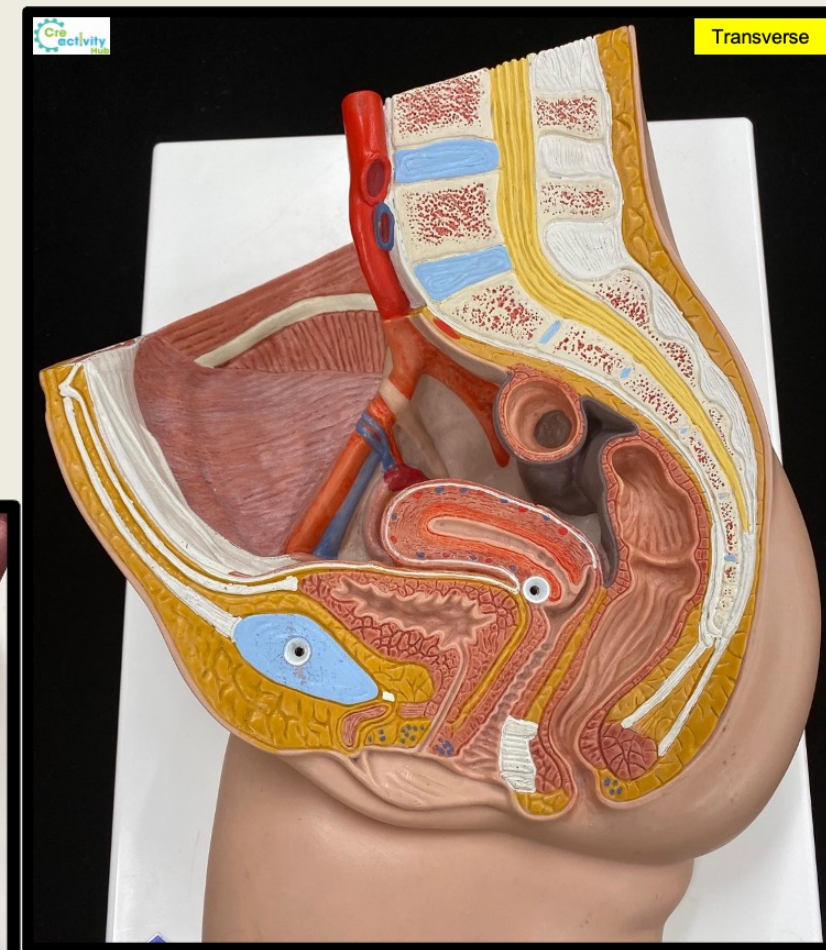
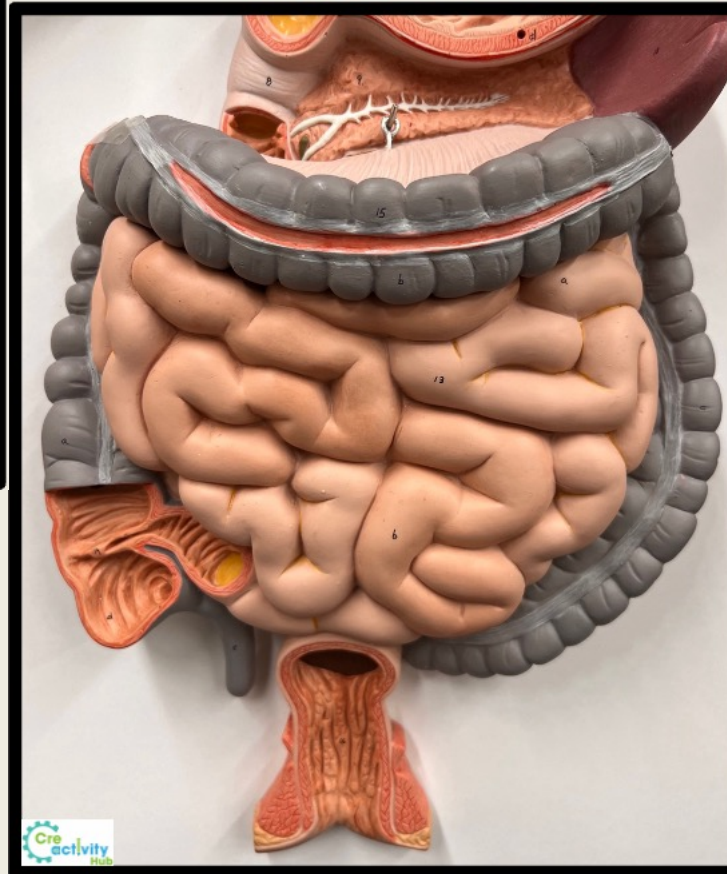
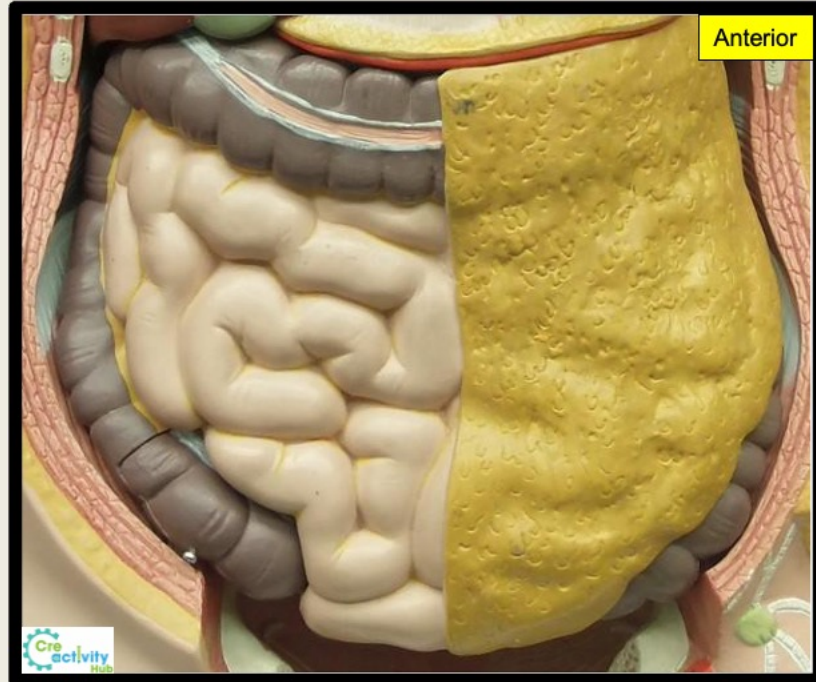


Large Intestine Terminology List

(you may choose just one answer when there are multiple acceptable terms)

- Anus
- Appendix
- Ascending colon
- Cecum
- Descending colon
- External anal sphincter
- Ileocecal valve or ileocecal sphincter
- Internal anal sphincter
- Rectum
- Sigmoid colon
- Taenia coli
- Transverse colon

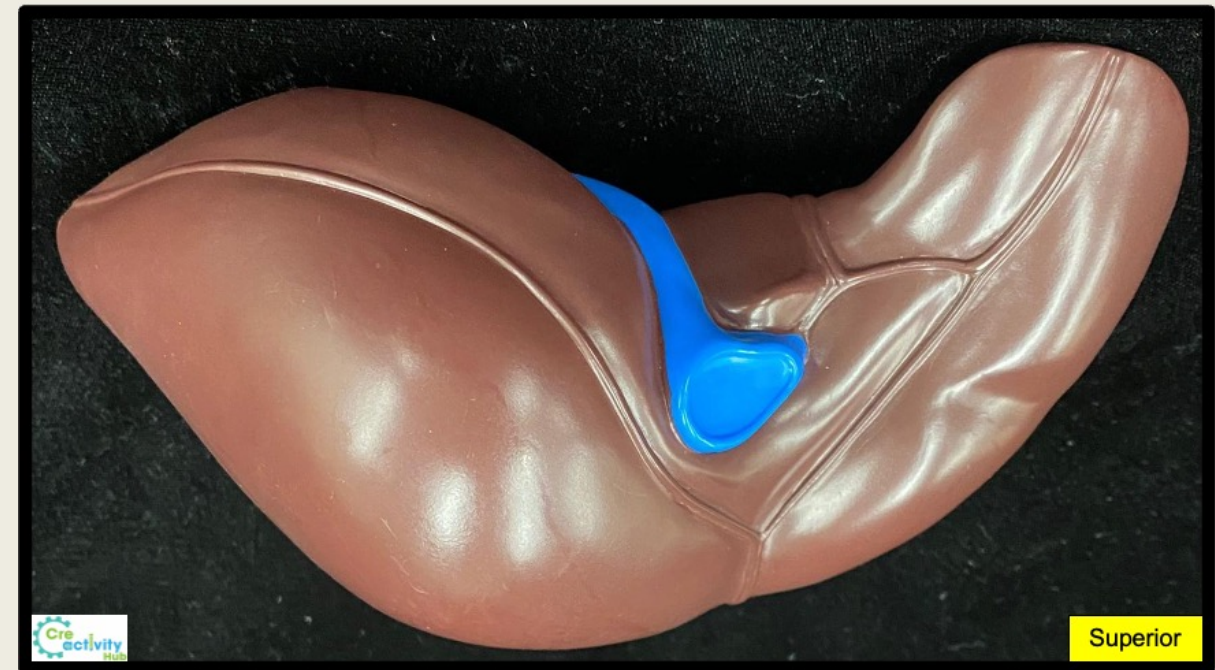
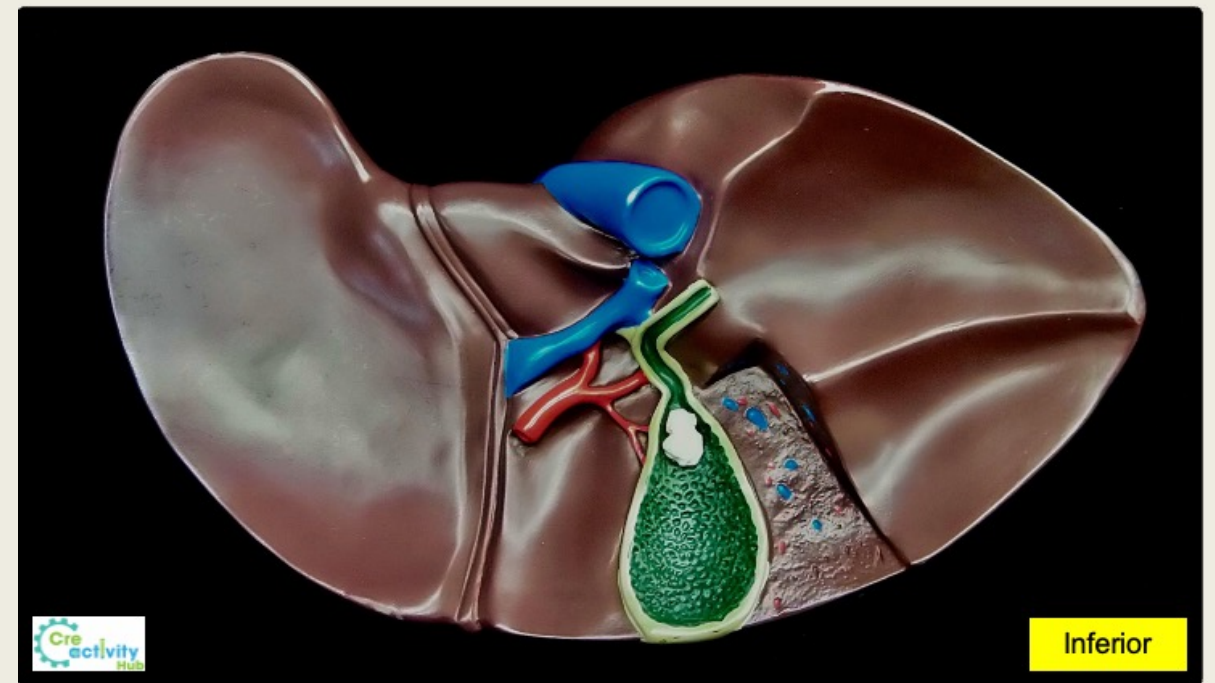
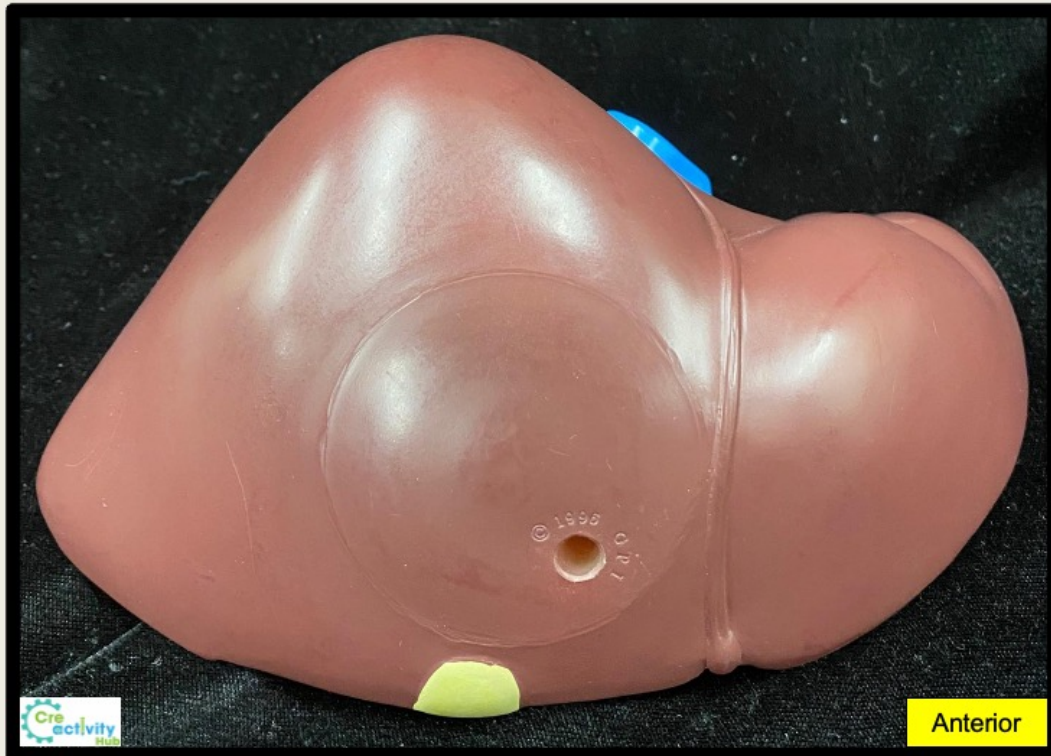
Large Intestine Models



Liver Terminology List

- Caudate lobe
- Coronary ligament
- Falciform ligament
- Left lobe
- Quadrate lobe
- Right lobe
- Round ligament

Liver Model



Other Structures/Organs Terminology List

- Bile duct
- Common bile duct
- Cystic duct
- Gallbladder
- Greater omentum
- Hepatic artery proper
- Hepatic ducts
- Hepatic portal vein
- Inferior vena cava
- Stomach

Other Structures/Organs Models

